



University of the  
Highlands and Islands  
Oilthigh na Gàidhealtachd  
agus nan Eilean

# Communicating climate change

– experience from Clim-ATIC

Clive Bowman



University of the  
Highlands and Islands  
Perth College

Centre for  
Mountain Studies

# Climate Change - Adapting to The Impacts, by Communities in Northern Peripheral Regions



Northern  
Periphery  
Programme  
2007–2013

Innovatively investing  
in Europe's Northern  
Periphery for a sustainable  
and prosperous future



European Union  
European Regional Development Fund



[www.clim-atic.org](http://www.clim-atic.org)

# Clim-ATIC



LAPIN  
YMPÄRISTÖKESKUS

Technical University of Denmark



Perth College  
Creating the University of the Highlands and Islands

VESTLANDSFORSKING



LYCKSELE  
KOMMUN



COUNTY GOVERNOR  
OF SOGN OG FJORDANE



METLA  
METSÄNTUTKIMUSLAITOS







1. Metal modes
2. Framing a message
3. Human brain processing systems
4. Single action bias
5. Uncertainty
6. Tragedy of the commons
7. Group affiliation



# Community / stakeholder workshops

Glen Urquhart, Scotland





# Working with primary school children to make films

Cairngorm National Park, Scotland



**Cairngorms Moving Image Project  
2009**



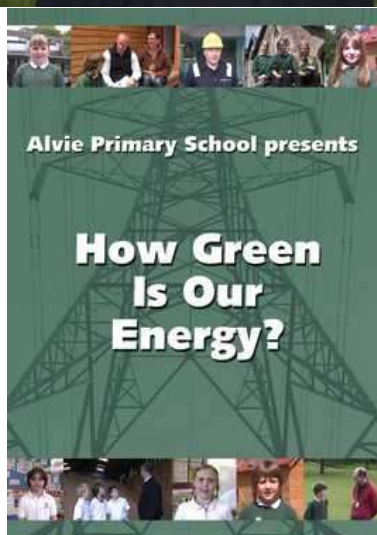




**Throughout the scriptwriting, training, filming and editing the schools were supported by Aberdeenshire Media Unit**







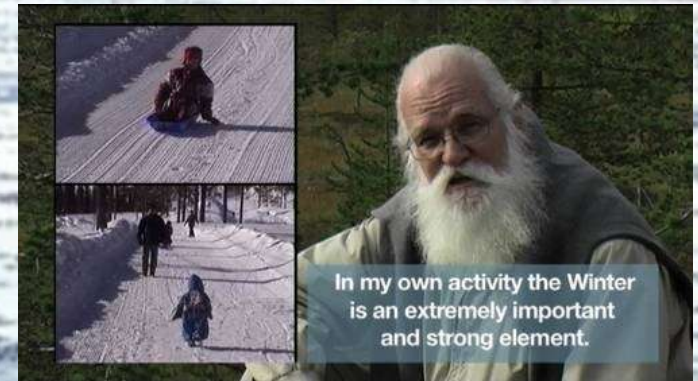


# The Unsinkable Lapland Film

Made by students of the University of Lapland, Rovaniemi, Finland

A FILM BY  
MATIAS TUOMELA \* HENNIKA TERVONEN \* JULIUS CHAVEZ \* MAX JUNTUNEN

THE UNSINKABLE LAPLAND







Clim-ATIC

ClimATIC2010's Channel

Subscribe

All

Uploads

Favorites



Info Favorite Share Playlists Flag

Clim-ATIC Transport Solutions Destination ARE Swedish Version.

From: ClimATIC2010 | May 8, 2011 | 3 views



Like



View comments, related videos, and more



Search

Date Added | Most Viewed | Top Rated



Clim-ATIC Transport Solutions Destination

3 views - 1 day ago

2:50



Clim-ATIC Destination ARE Transport

4 views - 1 day ago

3:21



Unsinkable Lapland Finnish Version.

2 views - 1 day ago

2:44



Background to Clim-ATIC sponsored film

3 views - 1 day ago

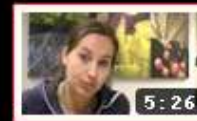
2:40



Clim-ATIC Testing Multi-Hazard Early

6 views - 1 day ago

3:19



Clim-ATIC Activities Norway (English)

9 views - 2 days ago

5:26



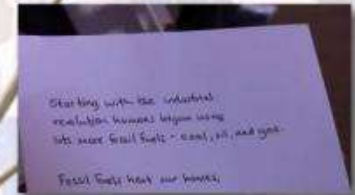
Clim-ATIC Project Activities Norway,

# Interactive games

Cairngorm National Park, Scotland

## The schools received input from visiting scientists

One of the most popular activities was 'The String Game' which illustrated some of the environmental impacts Climate Change may bring





# Clim-ATIC's Climate Change Impacts Board Game

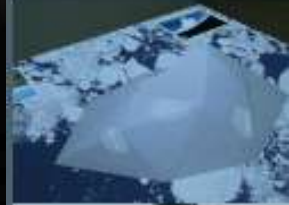
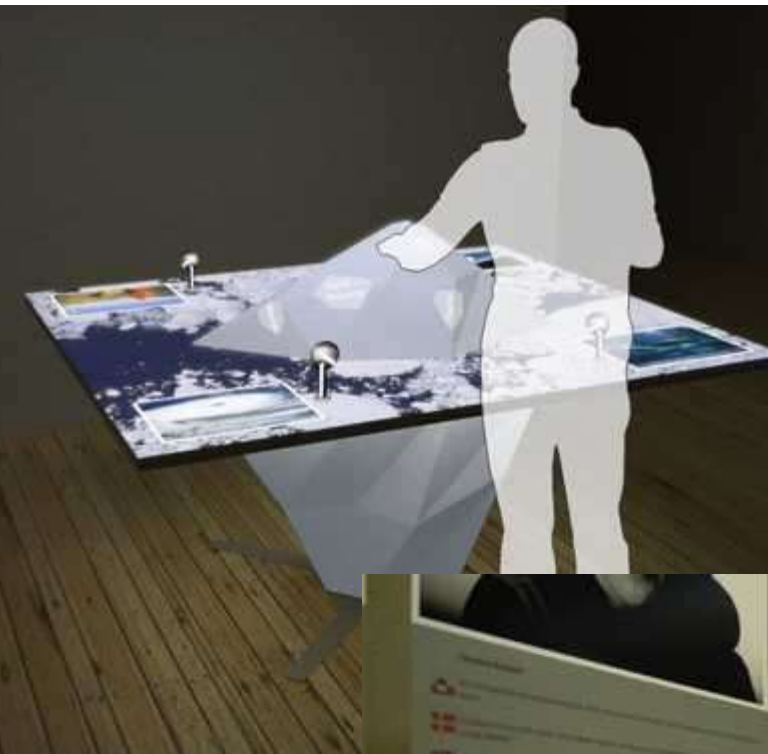
Take it in turns to cover each square describing a climate change with one of the 12 cards from your chosen theme, and then describe a possible impact relating to your card.

	Shorter winters	Earlier springs	Stronger windstorms	Drier summers in the East	 More windy days
More summer heat waves	An increase in warm extremes	 An increase in the number of storms	Sea level rise	 Longer summers	More drought events
Less winter precipitation falling as snow	An increase in the number of very hot summer days	An increase of daily temperature variability	An increase in CO2 conc.	Warmer summer nights	An increase in the intensity of rain storms
Generally warmer winters	 More winter rainy days	More sea storm surges	Shorter winters	 Earlier springs	More summer heat waves
Stronger windstorms	Drier summers	More windy days	An increase in warm extremes	An increase in the number of storms	Less winter precipitation falling as snow
 Sea level rise	Longer summers	More drought events	An increase in the number of very hot summer days	An increase of daily temperature variability	Generally warmer winters
		An increase in		More rainy days	Drier in the



# Breaking ice exhibition - the human face of climate change

Ilulissat, Western Greenland





# Utilising primary school children's imagination

Lycksele, Sweden

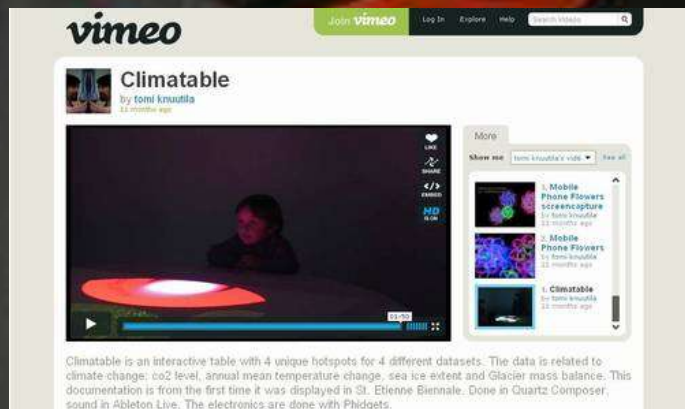


"The [Air purifier 70](#) takes in air at the front of a fan then goes into the filter holder, which purifies air from hazardous substances then out goes the clean air. it works amazingly well and it is incredibly clean!"



**Climatable** is an interactive table made in FINLAND with 4 unique hotspots for 4 different datasets or measurements.

The data is related to climate change: co2 level, annual mean temperature change, sea ice extent and sea level. The user can choose a year from the dataset and see and hear the climate changing from 1850 to 2009.





# Forestry sector knowledge transfer

Lycksele, Sweden





# Climate Change Adaptation Resource

[Home](#)
[CC-ATD](#)
[Case Studies](#)
[Training Resources](#)
[Contact Us](#)

Country

Scotland

Overland

Irish Sea

Sweden

Wales

Previous Stage

Vulnerability Analysis

Communication

Integrate climate

Adaptation Strategy

Implementation of

Measures

Theme

Energy

Transport

Tourism

Risk Management


Select Language

Download by CC BY-NC-SA

## Climate change vulnerability - Scotland







In Scotland, climate change is expected to decrease changes in temperature, rainfall and snow cover. These changes are causing significant shifts in the growing, breeding and migration seasons, as well as species abundance and diversity. Higher sea levels are leading to food risks, and coastal erosion is causing coastal erosion.

[Download](#)



Scenarios were developed in conjunction with stakeholders

1/6

Scroll Back

Reports


Presentations

Kit-its

Podcasts

Links

[Home](#)
[CC-ATD](#)
[Case Studies](#)
[Training Resources](#)
[Contact Us](#)




climate change adaptation case studies and training material  
[www.climatechangeadaptation.info](http://www.climatechangeadaptation.info)